

DESTINATION MEETS DESIGN

LIFESTYLE ■ HOSPITALITY

CONTENTS

ABOUT US

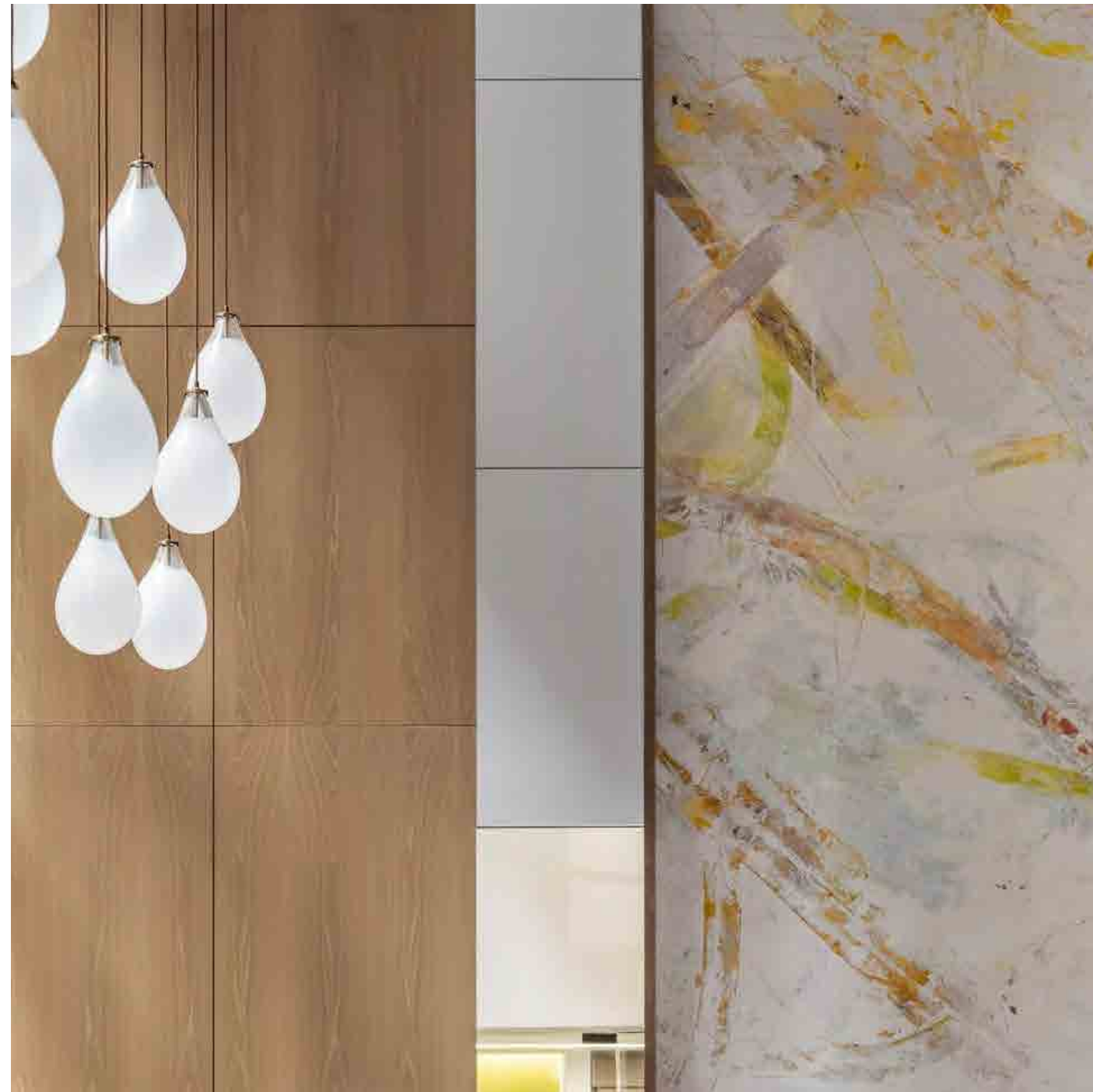


PROJECTS



PEOPLE





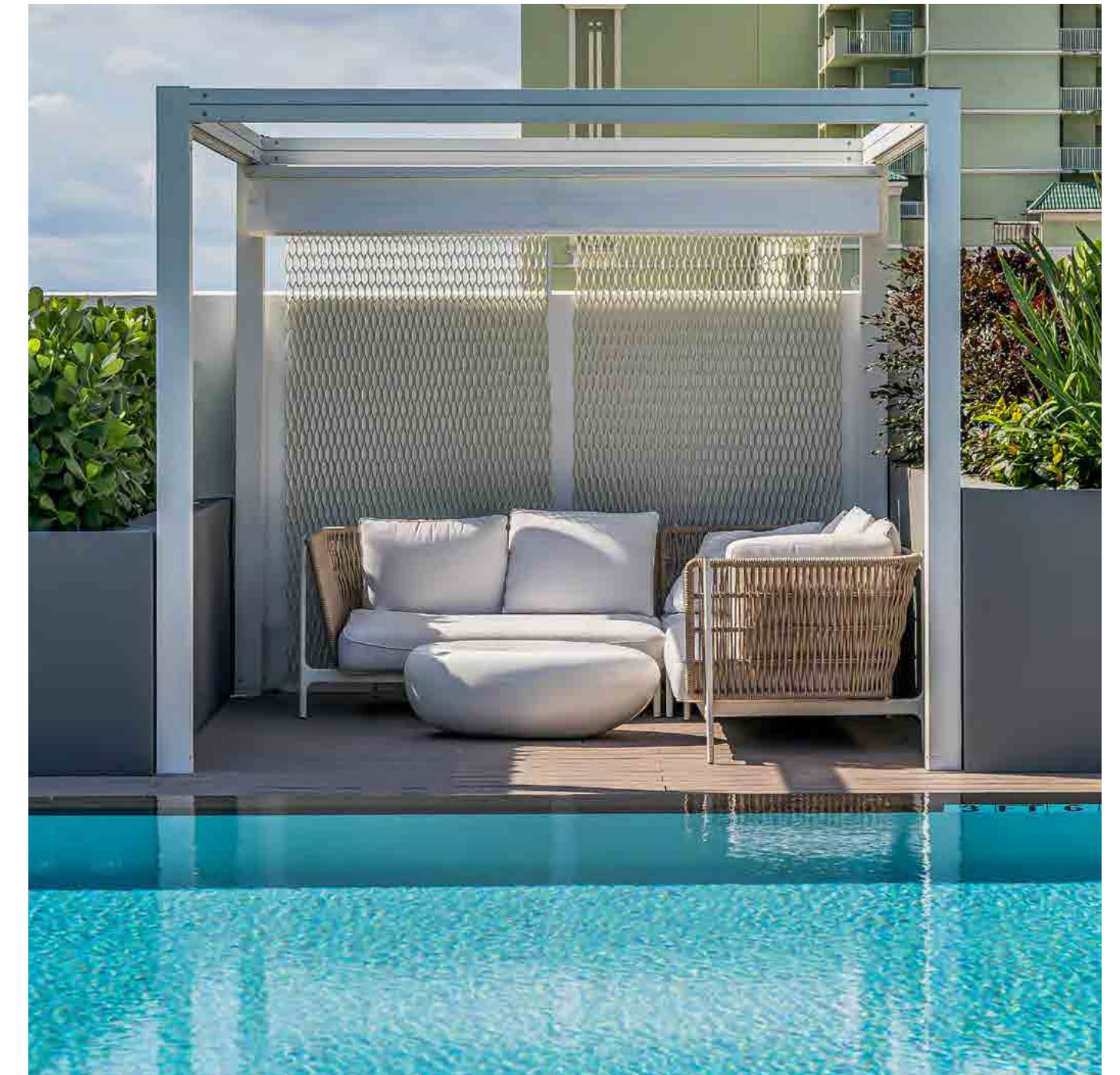
WHO WE ARE

Our Hospitality Studios deliver elevated design with the focus and responsiveness of a boutique firm. We operate within Stantec's broader network of global offices and multi-disciplined teams, and with these unique resources, we are able to bring the best talent to our clients' projects across the globe.



WHAT WE DO

From boutique properties to national flags and unique resort destinations, we look at what will enhance the guest experience and the owner's investment. We look beyond the defined limits of a project to consider the historical, social, cultural, and physical context, working closely with a wide range of stakeholders, from immediate users to the entire community.



OUR PHILOSOPHY

Our design philosophy is guided by five parameters of design: Vision; Responsive Design; Innovation; Performance; and Craft. We also believe great design is the end product of a collaborative process where clients share their needs, ideas and ideals, thus cultivating creative responses to our clients' aspirations.

VIRGIN HOTEL

New York, NY

*Scope: Architecture (Stantec),
interior design (by Stantec & Mark Zeff)*

Located on a previously neglected area of the NoMad neighborhood, The Virgin Hotel New York is a mixed-use development featuring luxurious rooms & suites, and several F&B amenities including indoor-outdoor terraces and balconies where guests and neighborhood residents fully immerse themselves in New York City's skyline in the heart of Manhattan. Multiple large retail tenants and curated food and beverage spaces sit at the base of the hotel bringing vitality to the area, and dramatically enlivening Broadway.



VIRGIN HOTEL
New York, NY



VIRGIN HOTEL

New York, NY



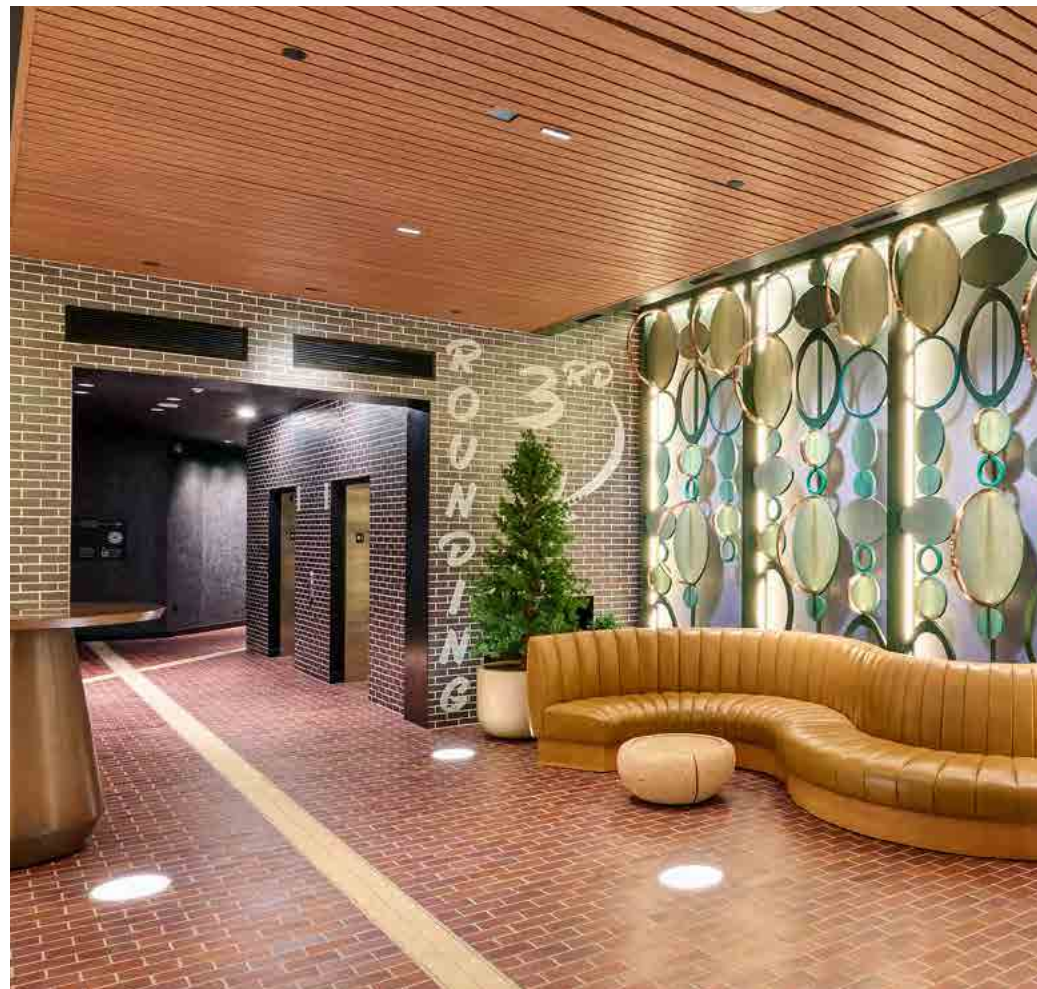
**THE RALLY HOTEL AT
MCGREGOR SQUARE**

Denver, CO

*SCOPE: Architecture; hotel rooms
interior design; lighting design for
the public areas.*

The Rally Hotel is a boutique gem in the heart of McGregor Square, just minutes from the Colorado Rockies' Coors Field. Stantec provided interior design services for the hotel rooms, evoking a sense of fun and comfort. Our lighting designs for the public areas thoughtfully complement the ambiance of each space, from bold and playful, to elegant and refined.





MCGREGOR SQUARE
Denver, CO

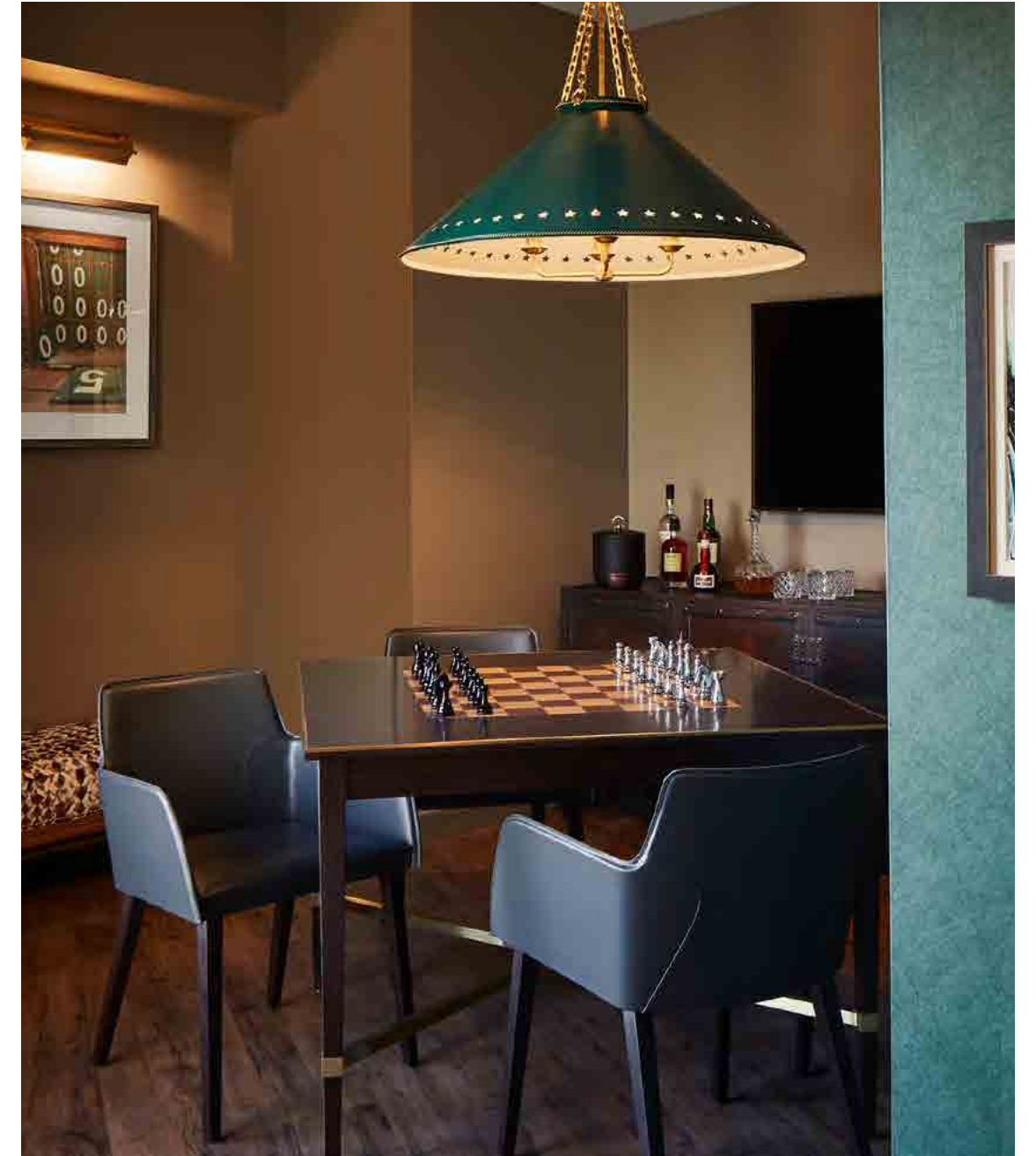


HOTEL ZACHARY

Chicago, IL

Scope: Architecture, interior design guestrooms & suites, lighting design

Hotel Zachary enlivens the storied Wrigley Field experience, its design honoring the ballpark's world-renowned 1914 architect Zachary Taylor Davis. Wood paneling, thoughtful details, and comfortable, luxurious interiors complement the elegant glass exterior. Hotel Zachary is the perfect destination for baseball fans, business and leisure guests, and Chicago residents.



HOTEL ZACHARY
Chicago, IL

SAN JUAN HOTEL

Miami, FL

Scope: Architecture, interior design

The inspiration for the San Juan hotel's renovation stems from the building's original classic post-war modern style. Warm woods with brass details, luxurious marble, and touches of navy and burlap convey nautical influences reminiscent of Old San Juan, Puerto Rico.



KIMPTON KAWANA BAY

Grenada

SCOPE: Architecture, interior design, structural engineering, landscape architecture

Our team is providing integrated design services for this new 5-star boutique resort located at the end of Grande Anse Beach. Our design evokes Kimpton's iconic, contemporary style influenced by the culture of Grenada, and luxurious guest rooms offer a handcrafted, organic approach to the guest experience.



KIMPTON KAWANA BAY

Grenada



THE GALE HOTEL
Miami, FL
Scope: Architecture,
interior design





ANJI HOTEL

Anji, China

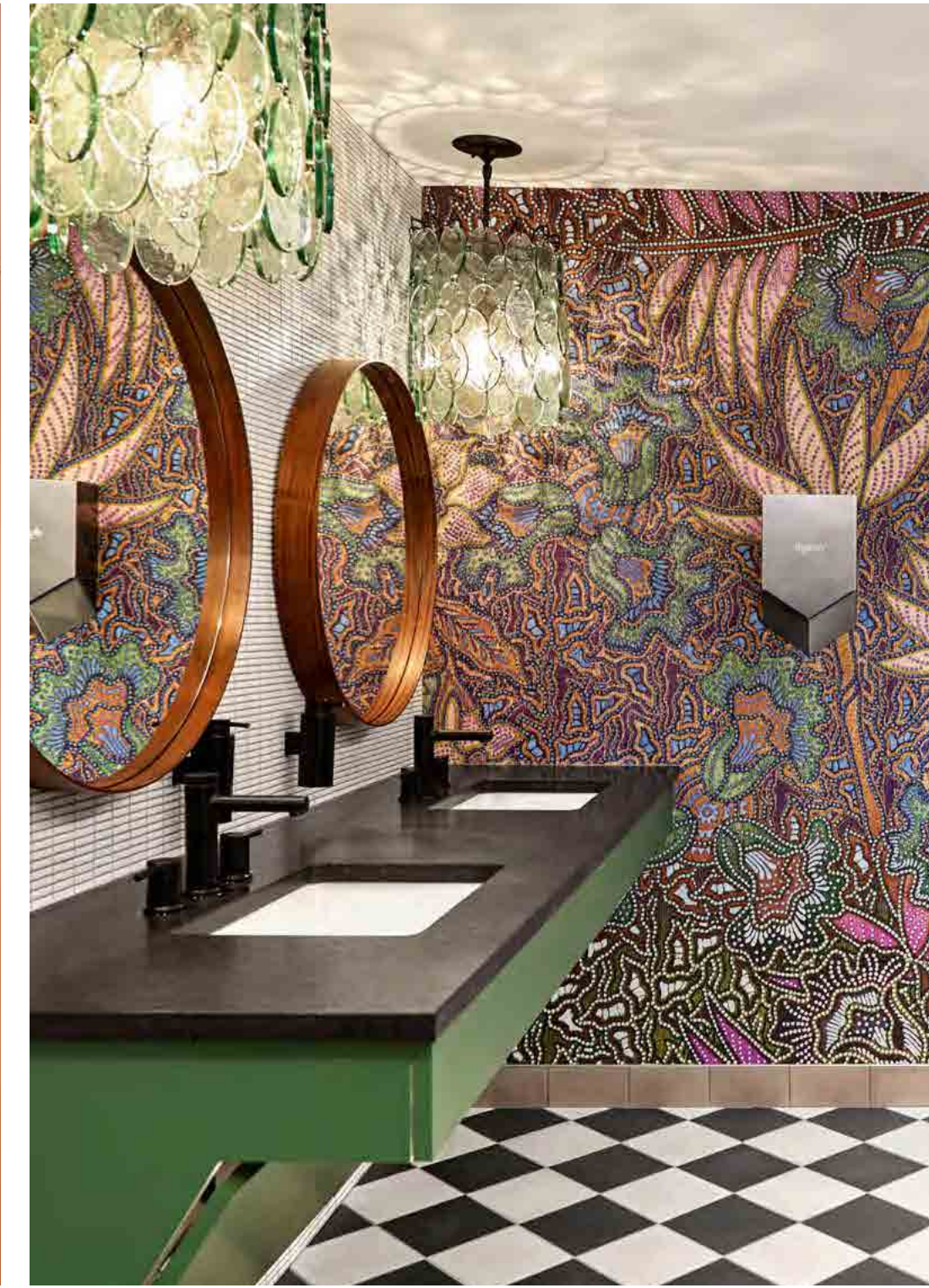
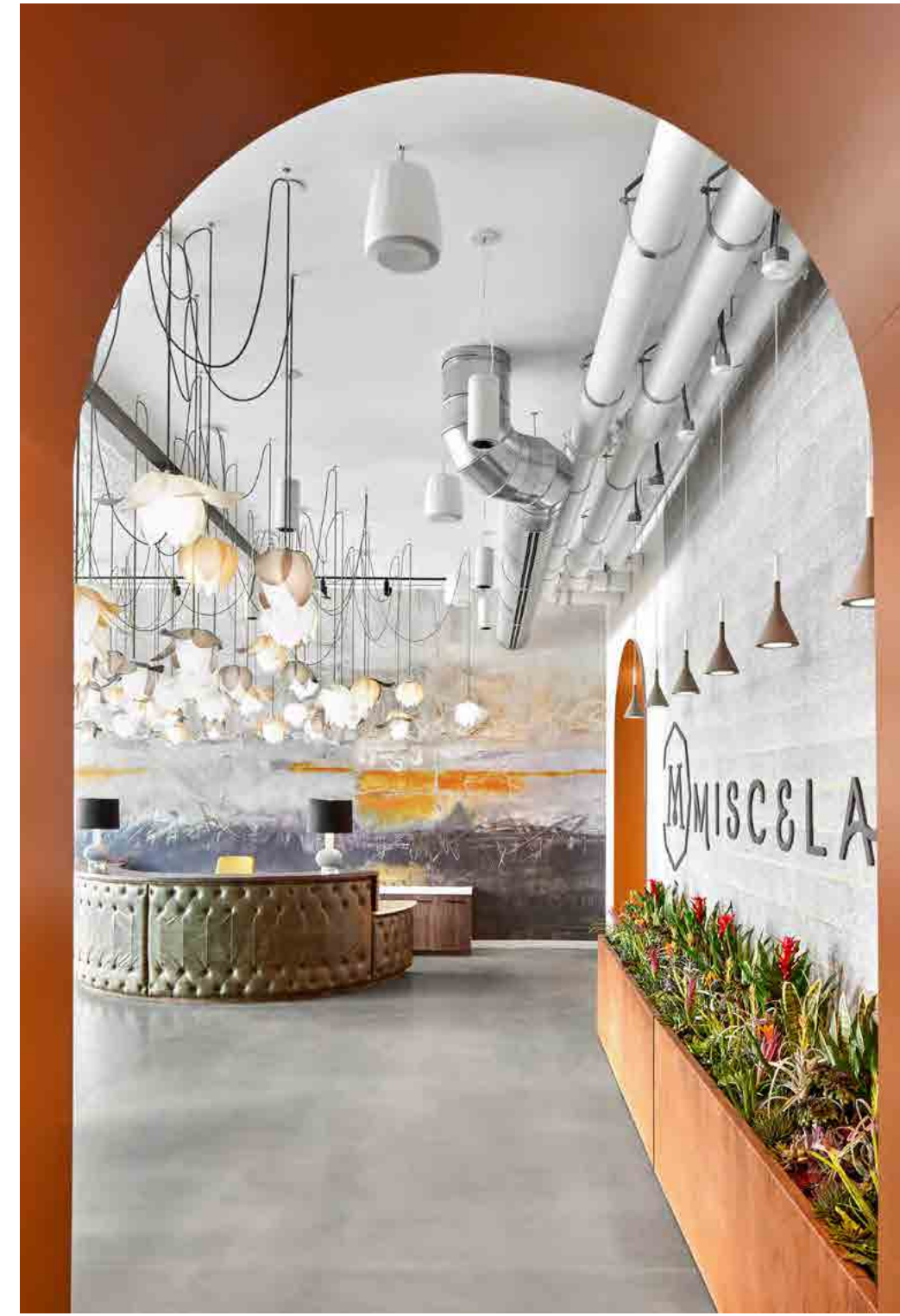
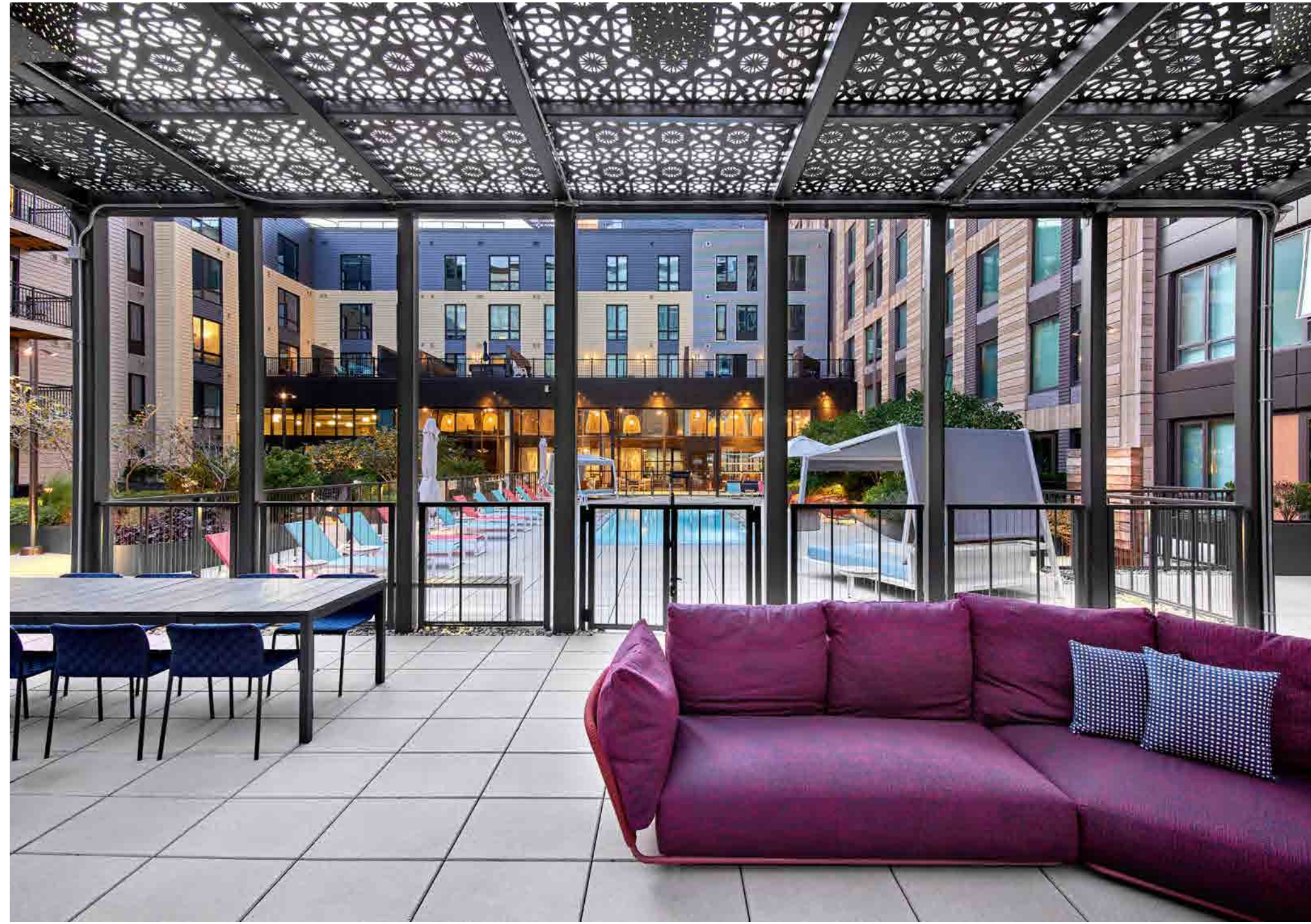
*SCOPE: Architecture,
interior design*

The Anji Hotel is a unique 5-star hotel located in the scenic area of the Yangtze River, within a growing popular leisure resort destination. Amenities include upscale Chinese dining, lobby bar and tea room, banquet space, and luxury spa facilities.



ANJI HOTEL
Anji, China

MISCELA Somerville, MA Scope: Architecture, Interior Design, Branding

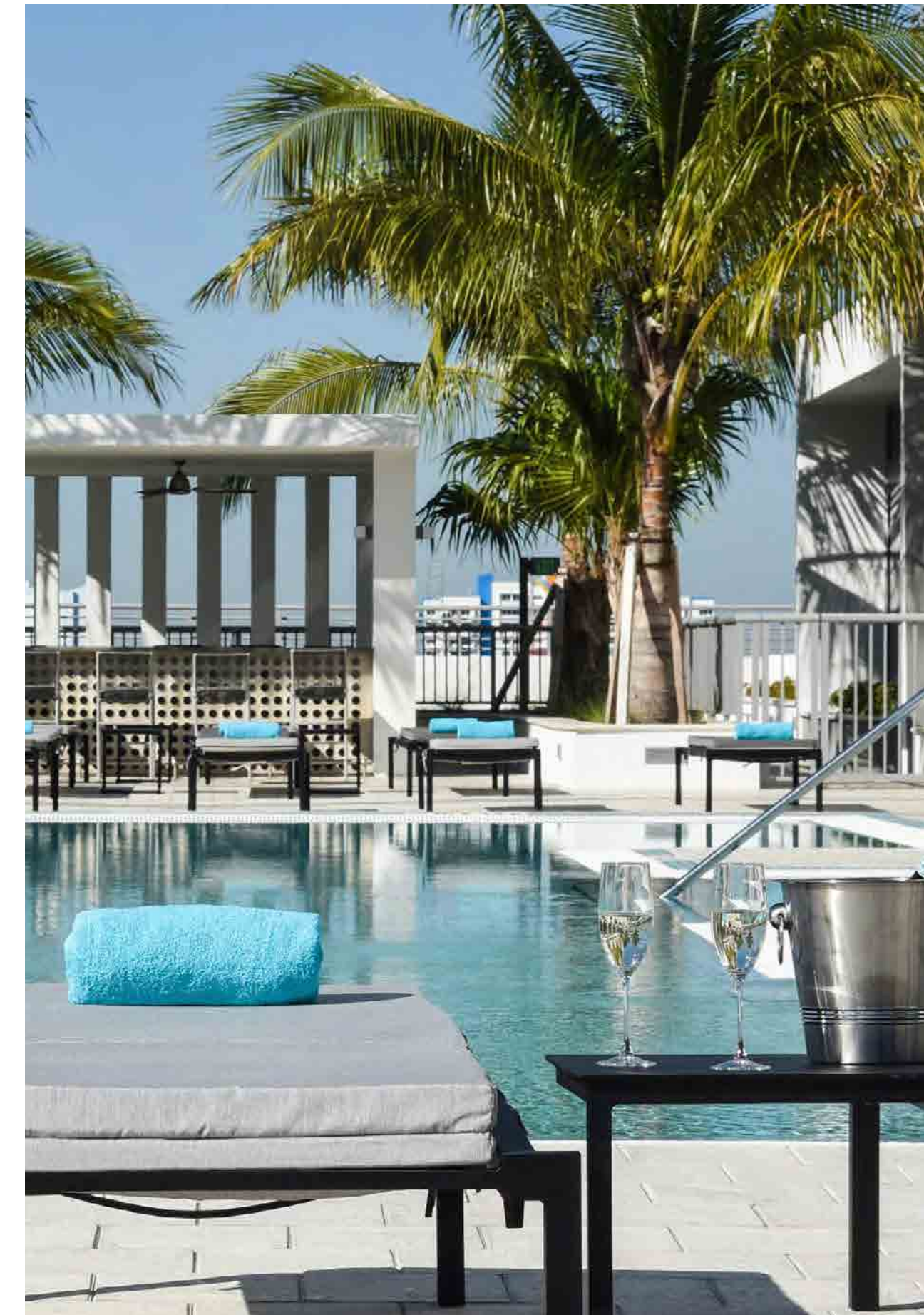


EVE AT THE DISTRICT

Miami, FL

Scope: Architecture, interior design

Named after “Eve”, an art piece of a mysterious woman by artist Anna Sweet, Eve at the District is a 19-story mixed-use tower including luxury residences, retail and restaurant space.



EVE AT THE DISTRICT
Miami, FL



MONARCH

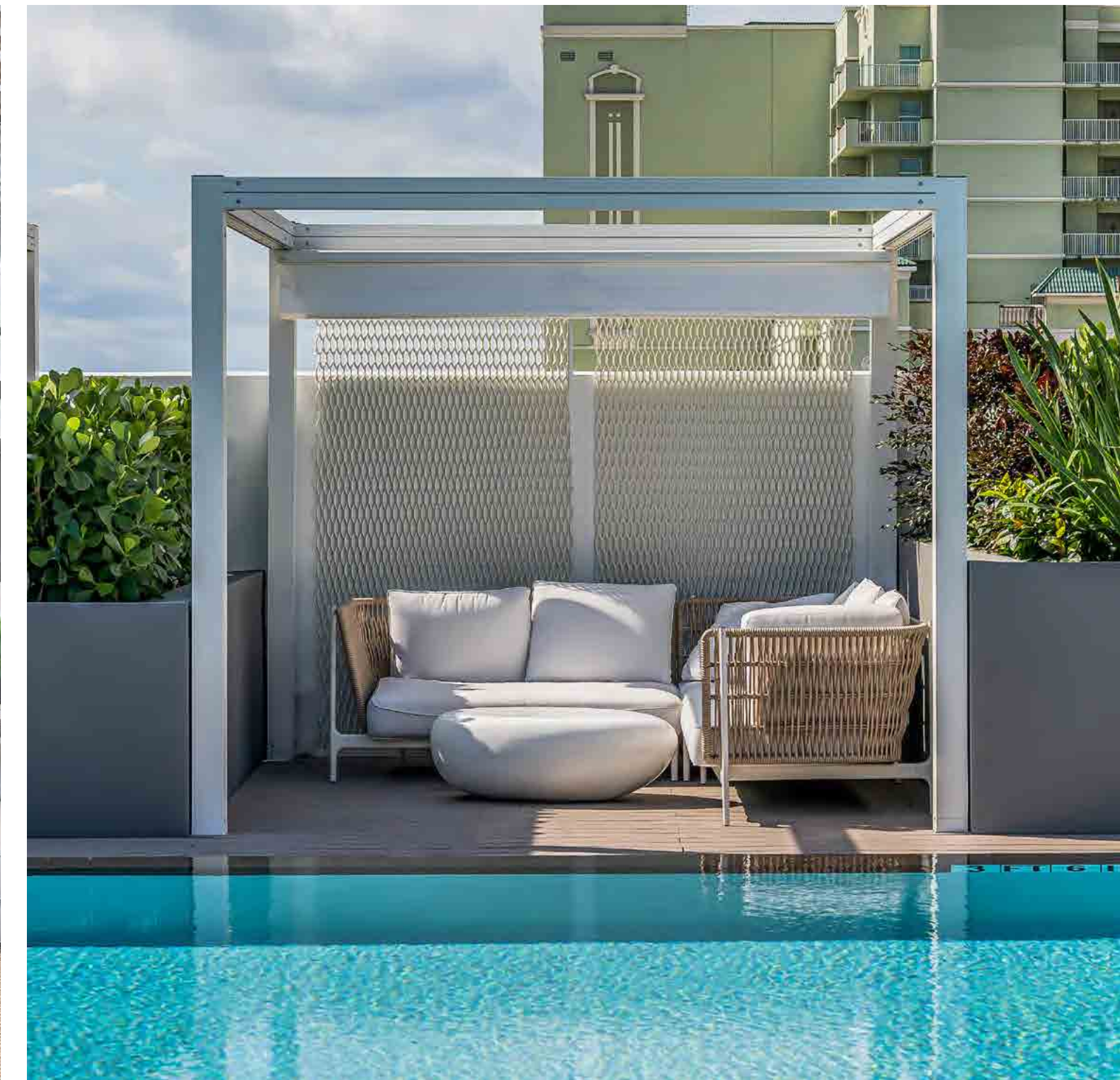
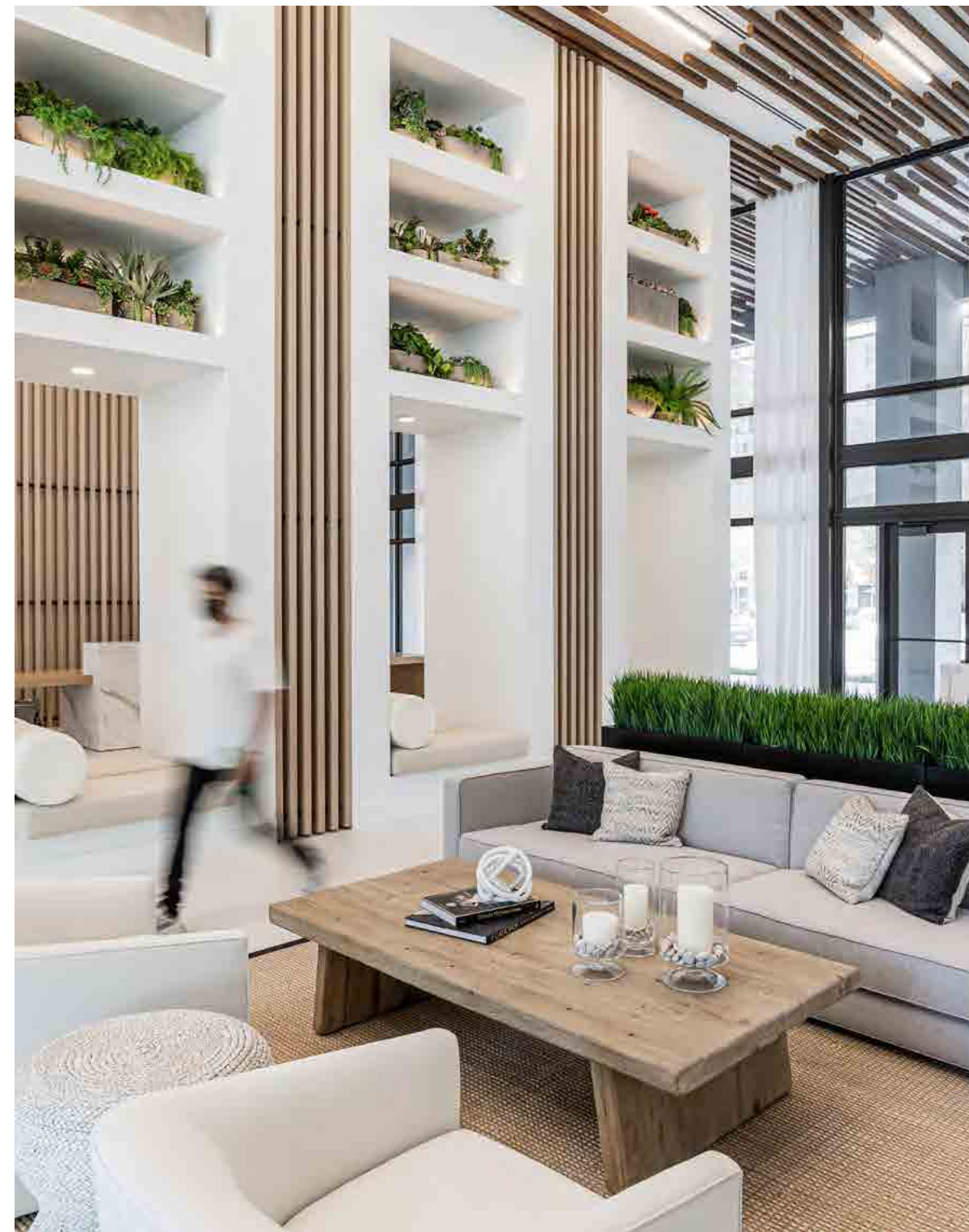
Gambrills, MD

Scope: Branding, interior design

Monarch sets the tone for a new suburban lifestyle by addressing the importance of balance in residents' lives. Our branding and interior design teams harnessed the best-of-both-worlds lifestyle by blurring boundaries between indoor vs outdoor, activity vs serenity, and old vs new.



LAS OLAS WALK Miami, FL Scope: Interior design





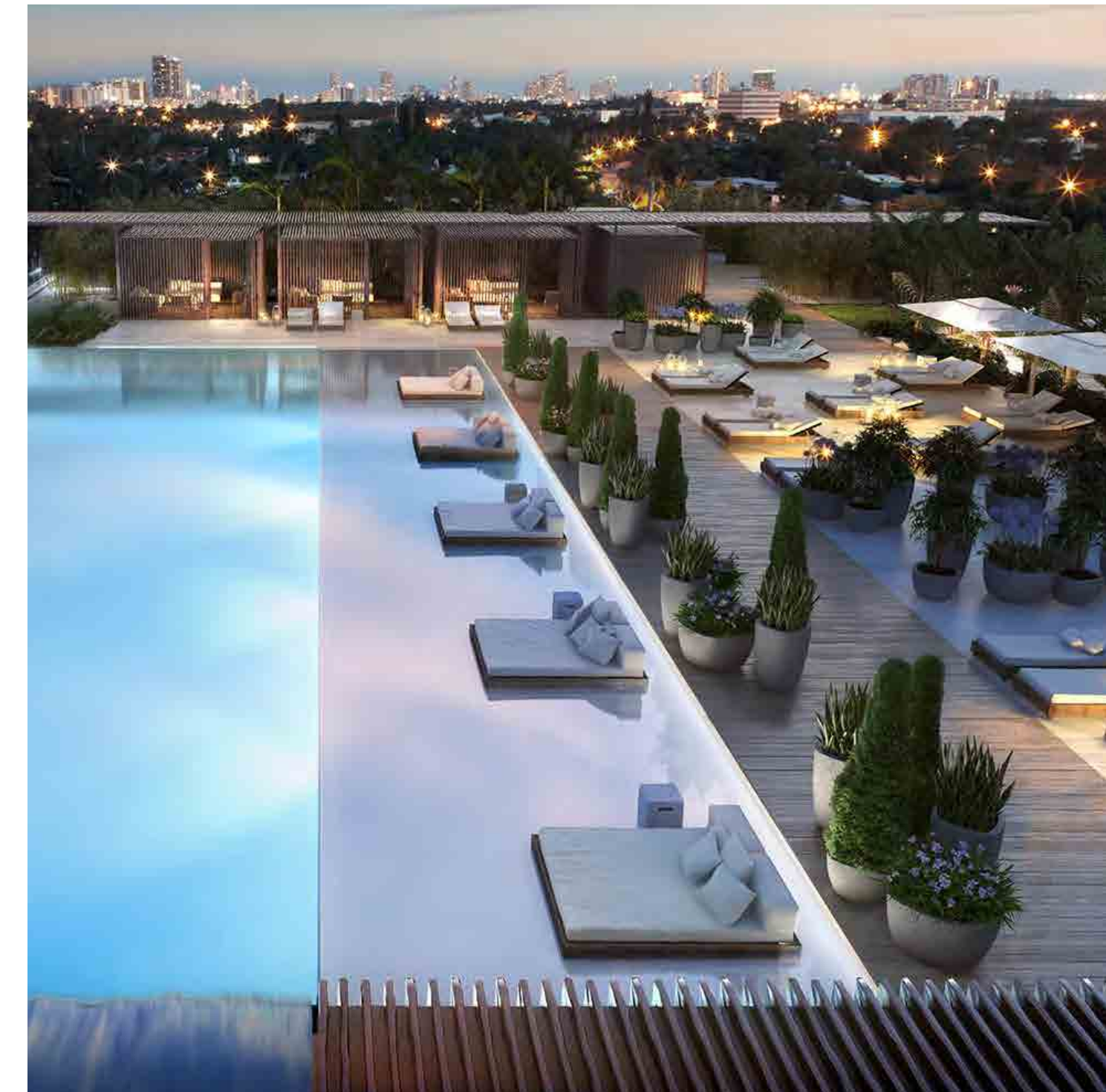
DRIFTWOOD

*Bay Harbor Islands, FL
Scope: Architecture, interior
design, buildings engineering
(SMEFPF)*

Our team provided integrated services for these unique, luxury waterfront condominiums within the growing island community. Drawing inspiration from the geography of the islands and the geometry of natural erosion, the design embodies the contrast between the built and natural environments.



In collaboration with Lissoni & Partners

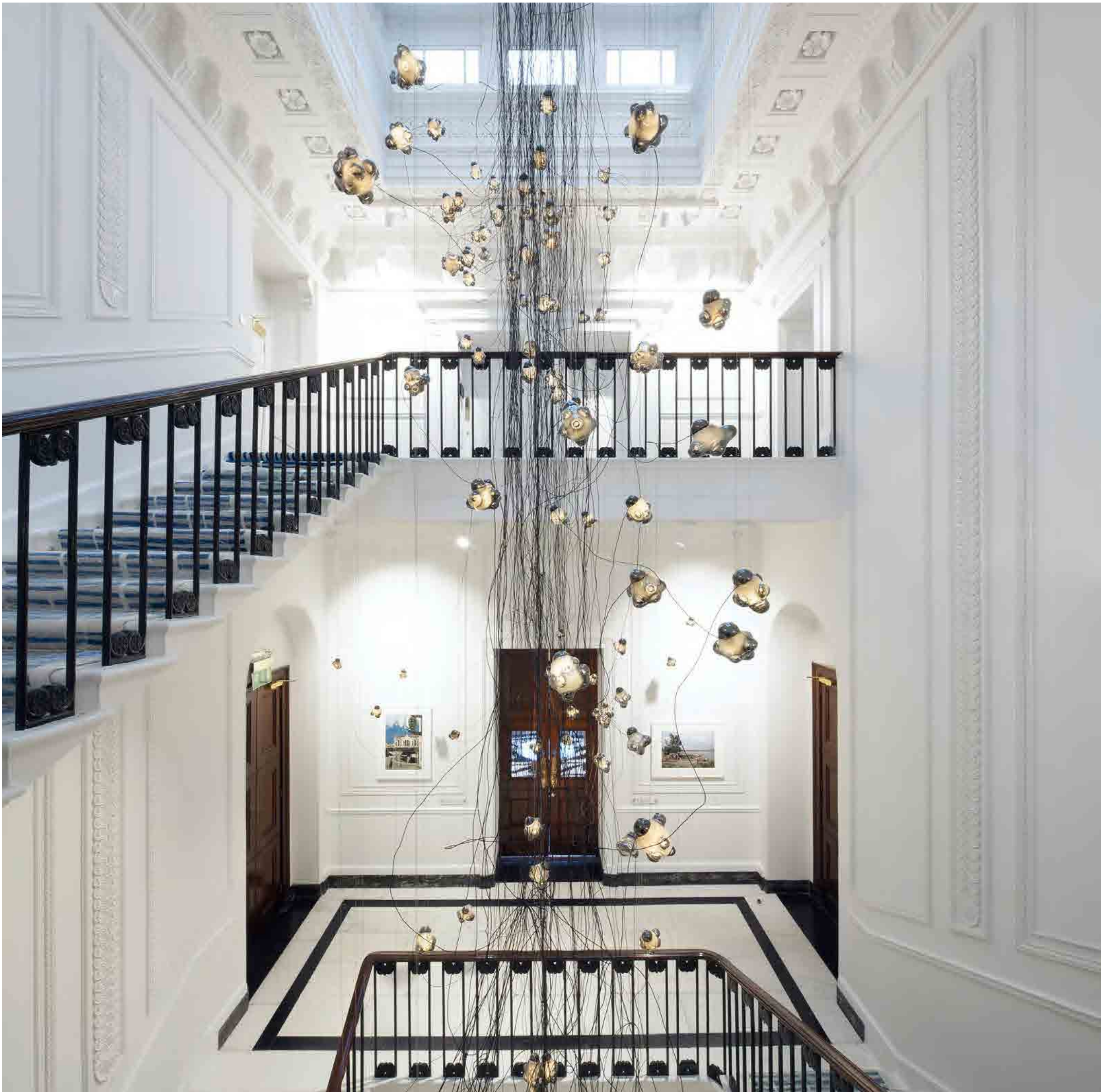
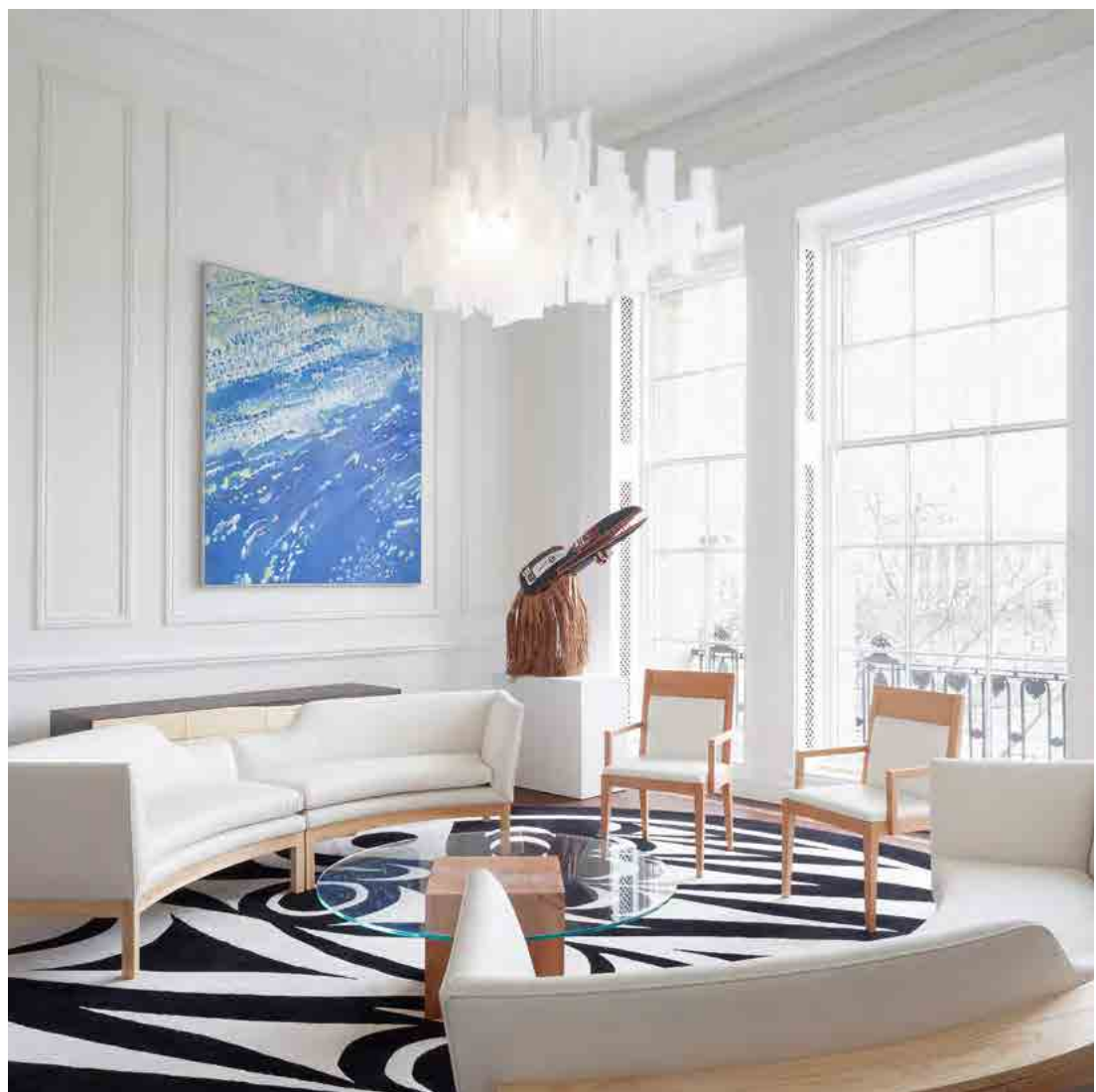


RITZ CARLTON RESIDENCES

Miami, FL

Scope: Architect of Record

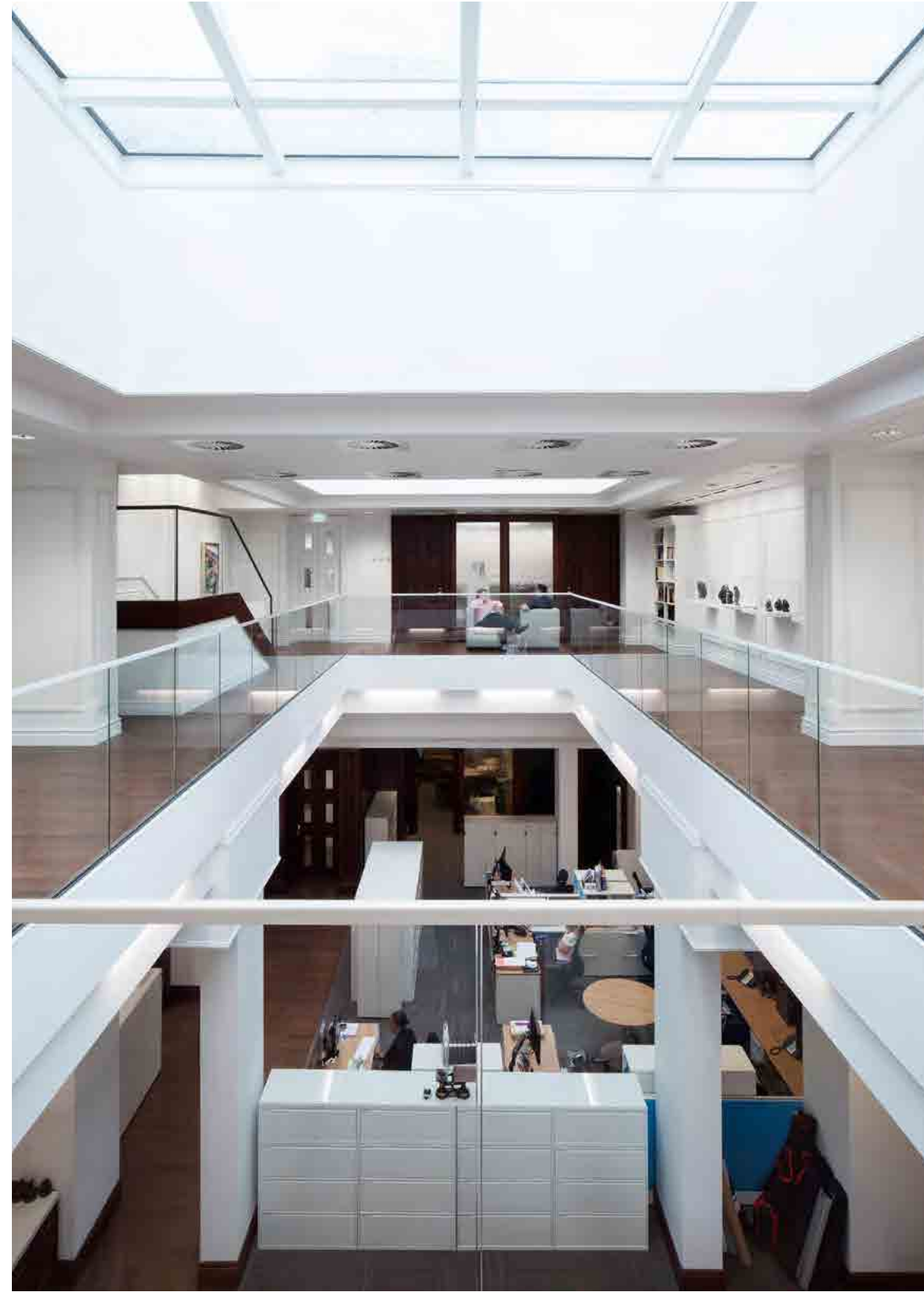
Once a popular destination hotel in the 1920s, then a military hospital during World War II, The Ritz Carlton Residences is the largest adaptive reuse project in South Florida. This project is a true measure of resilience and showcases the value of the collaborative design team of Stantec and Lissoni Associati from Milan.



CANADA HOUSE

London, UK

Scope: Architecture, interior design



CANADA HOUSE
London, UK

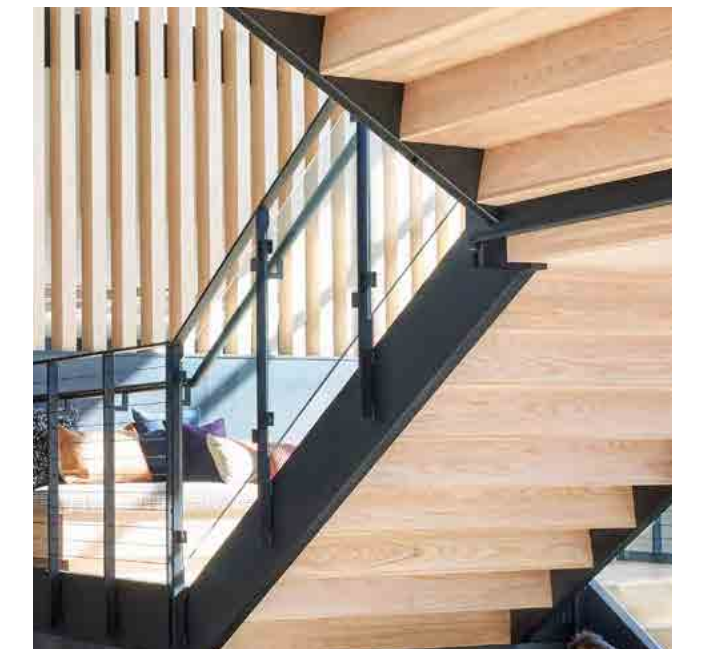
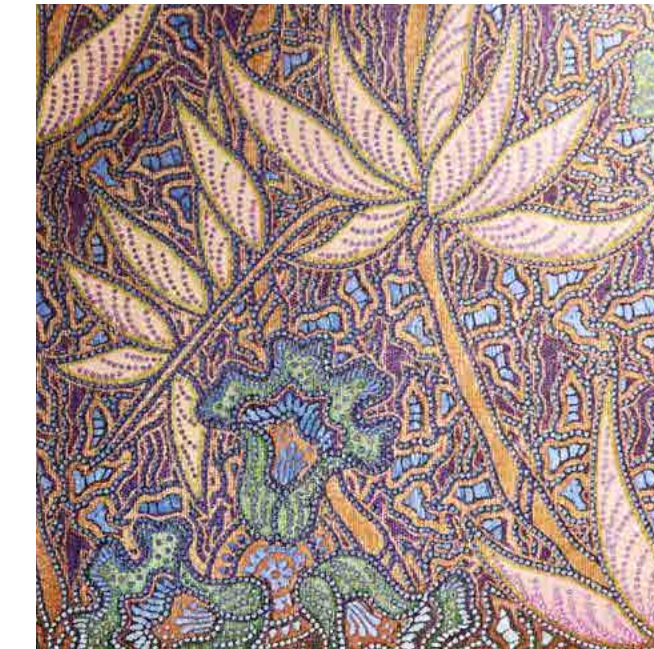


ARBUTUS SHOPPE

Vancouver, BC

Scope: Interior design

Our redesign introduces a more modern and minimalist quality to the once over-merchandised Shoppe. Translucent art on glass allows natural light to filter into the space to create an airier and more open feel. The lighting design adds vibrancy, with zones of sparkle as a counterpoint to the calming minimalism.



CONNECT WITH US

Duk Kim AIA, LEED AP
Global Hospitality Leader
duk.kim@stantec.com
(773) 710-2601